

Agaricus bisporus

* ** *

/ *

Agaricus bisporus

/ 0.15 0,10 0,05

/ 3.46

PS 50/ 51.3 / 0.05

50/ 37.5

PSA %22.57

Study the effect of different concentrations of aqueous extract of Liquorices on the speed of the mycelial growth of *Agaricus bisporus*, biomass and protein content

Mouaffak M. Muslat^{*} , Moustaffa N. Al-Heeti^{**} & Idham A. Al-Assaffii^{*}
^{*} College of Agriculture
^{**} Education Heet

Abstract

Study of the effect of aqueous Liquorice extract water to increase the mycelial growth rate, mat dry and protein content. The results revealed that not effect in mycelial growth rate of the *Agaricus bisporus* on culture medium while in mat dry weight was obtained the best result with 0.05 g/L licorice extract 51.3 mg/50 ml compared with 37.5 mg/50 ml. The best of protein content with PSA without using Liquorice extract is 22.57 %.

Agaricus bisporus

(1,2)
.(3)

A. bisporus

.(4)

D C B A
A. bisporus

.(5)

(Heterotrophic)

(6)

A. bisporus

.(7)

50

(8)

.(9)

(Resins)

2008/10/22

(Culture Media)

(Membrane Filters)

. 0,22

24 (4 : 1) 4:1

(10)

0,22

15 PS
 1.5

1.5

375

:

7.5

1

0.5

5

(Agar)

121

20

250

100

45

(10)

1.5

GL2 GL1 / 1.00 0.15 0.10 0.05 ()
 5 GL5 GL4 GL3
 9
 4 48 25
 25

1 PS
 15 500 250 4
 (10)
 / 1.00 0.15 0.10 0.05 ()
 4 GL4 GL3 GL2 GL1
 250 50
 48 25
 30 25 4
 24 60

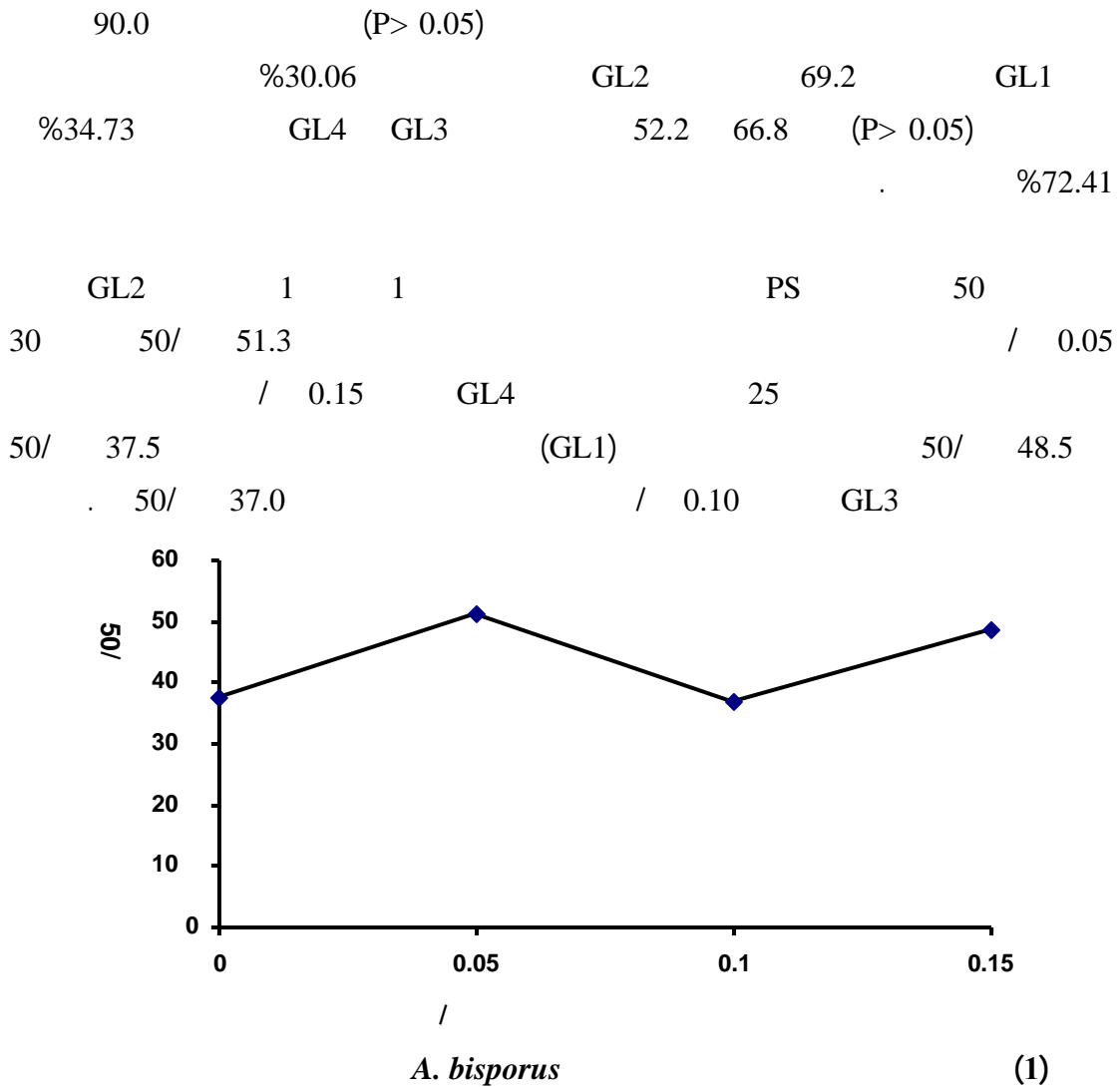
PS PSA
 (GL1)
 PSA *A. bisporus*
 1 1
 26 (9) / 3.46 (GL1)
 / 0.05 PDA 25
 %34.63 / 2.66 (GL2)
 / 2.01 2.57
 (GL4 GL3) / 0.15 0.10
 . / 1 GL5

A. bisporus

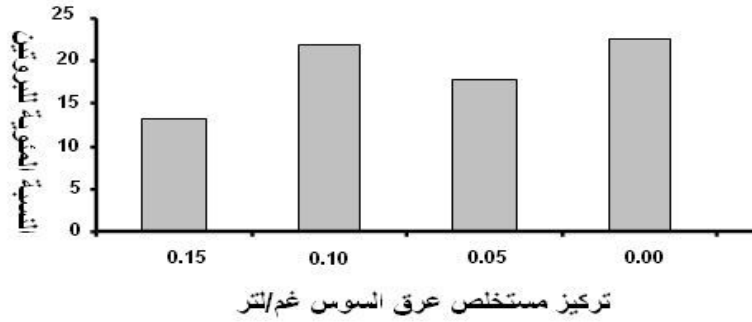
(1)

26

	(50/)	/	26 ()	(/)
%22.57	37.5	3.46	90.0	GL1 / 0.00
% 17.78	51.3	2.66	69.2	GL2 / 0.05
%21.88	37.0	2.57	66.8	GL3 / 0.10
%13.11	48.5	2.01	52.2	GL4 / 0.15
-	-	-	-	GL5 / 1.00
3.058	19.13	-	0.833	(P> 0.05)LSD



2 1 PS
 % 22.57 (P> 0.05)
 %21.88 (GL3) / 0.10 PS (GL1)
 0.15 0.05 %3.15
 %72.16 %26.94 %13.11 %17.78 /
 .(GL1)



A. bisporus

(2)

(Glycyrrhizin) / 0.15 0.10 0.05
 %3.66 %4.22
 (12) (11)

.1 / 1.00 GL5
 0.05

(13)

(12)

A. bisporus

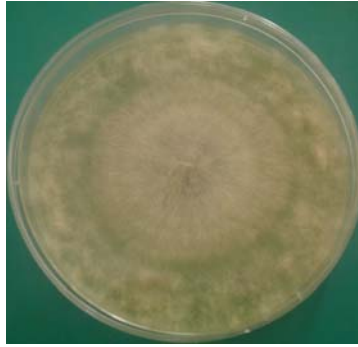
(14) 6-5

. (15) 8.2-6.5

()



GL2 (0.05 gm/L)



GL1 (0.00 gm/L)



GL4 (0.15 gm/L)



GL3 (0.10 gm/L)



GL5 (1.00 gm/L)

A. bisporus

PSA

(1)

- .259 .(1976) -1
17 . .
- .(2006) -2
76 . .()
- 3- Chang, S.-T. and Miles, P. G. (2004). Mushrooms Cultivation, Nutritional Value, Medicinal Effect and Enviromental Impact, 2nd Ed. CRC Press LLC. USA. Pp. 451.
- 4- USDA (2006). Nutrient Database. The Nutrient Data Laboratory (NDL) has the responsibility to develop USDA's National Nutrient Database for Standard Reference. P.1.
- 5- Ren, Z. ; Guo, Z. ; Meydani, S. and Wu, D. (2008). White Button Mushroom Enhances Maturation of Bone Marrow Derived Dendritic Cells and their Antigen Presenting Function in Mice. J. Nutr. 138:544-550.
. (1993) -6
.251-242 . .
- 7- Schmidt, O. (2006). Wood and Tree Fungi, Biology, Damage, Protection and Use. Springer. Germany. Pp. 334.
- . .(1988) -8
477 . .
- . .(1977) -9
358 . .
- .(1987) -10
304 . .
- .(2003) -11
. (*Glycyrrhiza glabra*)
.26-19:(2)34
- .(1984) -12
. (TMV)
- 13- Taiz, L. and Zeiger, E. (1998). Plant Physiology, 2nd Ed. ,Sunderland MA, U.S.A.
- 14- Hartung, H. A. (1979). Glycyrrhizin-free Fractions from Licorice Root and Process for Obtaining such Fractions. United States Patent, Patent No. 4,163,067 .USA. P.1
- 15- Royse, D. J. (2008). Spawning to Casing in Commerical Mushroom Production. The Pennsylvania State University. University Park, PA 16802.